

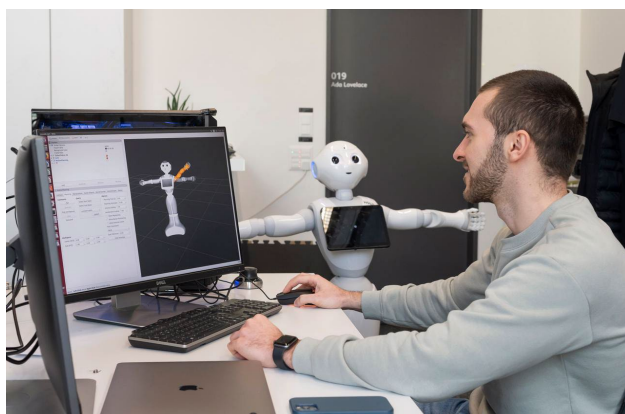
Fact Sheet for Partner Universities 2024/2025

Name of the University	Hochschule Luzern (HSLU) Lucerne University of Applied Sciences and Arts
School / Faculty	Hochschule Luzern – Informatik (HSLU-IT) School of Computer Science and Information Technology
Postal Address	International Office Campus Zug-Rotkreuz Suurstoffi 1 CH-6343 Rotkreuz
Website	International Office - General Website
General IO Email Address	international.it@hslu.ch
Erasmus Code	CH LUZERN14
Information for Incoming Exchange Students	Information for Incoming Students
International Office	
International Relations Co-Heads International Office	Daniela Stoll, partnerships.it@hslu.ch Selma Crosby, partnerships.it@hslu.ch
Exchange Program Coordinators	Salome Lütolf, international.it@hslu.ch Annik Scholzen, international.it@hslu.ch



Important Dates	
Fall Semester 2024 (Up to date semester dates can be found on our website)	
Nomination & Application Deadlines	<p>Nomination (by email): 15 April 2024</p> <p>Application (online): 30 April 2024 for the following fall semester and/or full academic year</p> <p>After nomination of the student, they will receive access to our online application tool (Mobility Online) to complete their application.</p>
Get started in Lucerne Workshops (mandatory)	<p>Part One: 6 July 2024, online via Zoom</p> <p>Part Two: 14 September 2024, on-site in Lucerne</p> <p>Registration and more information here.</p>
Introductory weeks	<p>Introductory weeks for new incoming students take place two weeks before the semester starts (2 September - 13 September 2024). Students can choose between intensive language courses or courses in their study field. For non-German speaking incoming students we highly recommend attending the German as a foreign language course.</p>
Semester dates	<p>16 September 2024 – 1 February 2025</p> <p>Exam period: 13 January 2025 - 1 February 2025</p> <p>Students are expected to be in Switzerland for the exam period.</p>
Public holidays	<ul style="list-style-type: none"> • 1 November 2024 (All Saints' Day) • 8 Dezember 2024 (Immaculate Conception)
Spring Semester 2025 (Up to date semester dates can be found on our website)	
Nomination & Application Deadlines	<p>Nomination (by email): 15 October 2024</p> <p>Application (online): 31 October 2024 for the following spring semester</p> <p>After nomination of the student, they will receive access to our online application tool (Mobility Online) to complete their application.</p>
Get started in Lucerne Workshops (mandatory)	<p>Part One: December 2024, online via Zoom (date to be announced)</p> <p>Part Two: February 2025, on-site in Lucerne (date to be announced)</p> <p>Registration and more information here.</p>
Introductory weeks	<p>Introductory weeks for new incoming students take place two weeks before the semester starts (3 February – 14 February 2025). Students can choose between intensive language courses or courses in their study field. For non-German speaking incoming students we highly recommend attending the German as a foreign language course.</p>
Semester dates	<p>17 February 2025 – 5 July 2025</p> <p>Exam period: 16 June 2025 – 5 July 2025</p> <p>Students are expected to be in Switzerland for the exam period.</p>
Public holidays	<ul style="list-style-type: none"> • 18 April 2025 (Good Friday) • 21 April 2025 (Easter Monday) • 29 May 2025 (Ascension Day) • 09 June 2025 (Whit Monday) • 19 June 2025 (Corpus Christi)

Academic Information	
Courses for Incoming Exchange Students	The course offer can be found on our website for incoming students.
Grading System	From 1 – 6 (6 is the best, 1 is the lowest grade, passing grade is 4)
ECTS System	The Lucerne University of Applied Sciences and Arts fully subscribes to the ECTS System and allocates ECTS credits to all undergraduate and postgraduate programs. In line with ECTS requirements, 60 credits measure the workload of a full-time student during one academic year. One ECTS points equals to 30 hours of work (lessons, self-study, homework, etc.).
Full-time Study Load	Maximum of 30 ECTS per semester (minimum 18 ECTS).
Language Requirements	Proof of English Proficiency at least B2 level (if you're not a native speaker and applying for courses taught in English) or Proof of German Proficiency at least B2 level (if you're not a native speaker and applying for courses taught in German)
Admission Requirements	Students must have completed at least two semesters of study at the home university before their exchange semester with us, proof of language proficiency, recommended GPA 2.75 or above.
Language Courses	HSLU's language centre offers a wide range of language courses.
Course Registration	The exchange program coordinator of the Lucerne University of Applied Sciences and Arts will do the course registration for you according to your predefined learning agreement, except for language courses. For those you must enroll yourself (information follows application).
Transcripts of Records	Transcripts are generally available few weeks after the final exams. The exchange program coordinator will send the official transcript to the student's home institution and a copy to the student by email.



Further Information for International Students

General Information for Incoming Students	Information on courses available in English, student guide, application process can be found on: Information for Incoming Students
Accommodation	Please find our on-campus accommodation offer here . Room bookings must be made via our online application tool (Mobility Online). Booking period for fall semesters starts on 15 May for students from partner universities. Freemover students can book as of 30 May. Booking period for spring semesters starts on 15 November for students from partner universities. Freemover students can book as of 30 November.
Campus Video	HSLU Campus Zug-Rotkreuz Video HSLU Study in the Heart of Switzerland
Buddy Program	The buddy program is run by ESN Luzern (Erasmus student network). Incoming students can sign up for a buddy during application process.
Visa Information	Visa Information Website Please contact our International Office, we provide more information in case you need a visa to enter Switzerland.

