

INTERNATIONAL COLLABORATION

As a university with global vision, GMU has carried out extensive collaborations in research, teaching, and training with renowned universities such as University of Strasbourg, University of Birmingham, University of Toronto, California State University Northridge, Yonsei University College of Dentistry, National University of Singapore, Queensland University of Technology, Hong Kong University, Chung Shan Medical University and I-Shou University. A substantial number of experts from prestigious universities abroad are engaged with the University as adjunct professors, distinguished professors and visiting professors. Notably, The Sino-French Hoffmann Institute is a joint project with the 2011 Nobel Laureate Jules Hoffmann.

For six decades, Guangzhou Medical University has undertaken substantial progress in medical education, research and health care. GMU will continue to advance the university by employing top faculty, developing quality disciplines and delivering signature programmes. GMU is committed to making greater efforts in education, scientific research, health care and cultural legacy innovation for the future of China and the world.

KEY RESEARCH INSTITUTES

- Guangzhou Institute of Respiratory Health
- Sino-French Hoffmann Institute
- Institute of Neuroscience
- Guangzhou Institute of Obstetrics & Gynecology
- Institute for Chemical Carcinogenesis
- Guangzhou Institute of Oncology
- Guangzhou Institute of Cardiovascular Disease
- Guangzhou Institute of Urology
- Institute of Integrated Chinese and Western Medicine
- Guangzhou Institute of Molecular and Clinical Pharmacology
- Guangzhou Institute of Snake Venom and Biotoxins
- Guangzhou Institute of Oral Disease
- Guangzhou Institute of Orthopaedics
- Institute of Basic Medical Sciences
- Institute of Biomedical Engineering
- Institute of Humanities and Social Sciences

CONTACT US

THE YUEXIU CAMPUS: No.195, Dongfeng Xi Road, Guangzhou, China, 510182
THE PANYU CAMPUS: Xinzao Town, Panyu District, Guangzhou, China, 511436
TEL: +86 20 37103000 FAX: +86 20 37103099 WEBSITE: <http://www.gzhmu.edu.cn>



Welcome to GMU



Guangzhou Medical University (GMU), formerly known as Guangzhou Medical College, founded in 1958, is a medical institution which offers a full range of programmes at undergraduate and graduate levels.

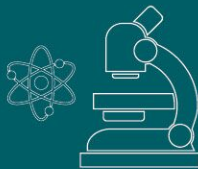


PROGRAMMES

GMU offers 20 full-time undergraduate programmes covering 5 disciplines including medicine, science, management, engineering and law. In addition to its quality undergraduate programmes, GMU offers excellent M.Sc. programmes and PhD programmes. GMU started recruiting international students for the MBBS programme (Bachelor of Medicine and Bachelor of Surgery) in English beginning in 2010. In total, GMU is home to approximately 11,000 full-time students.

Undergraduate Programmes >>

- Clinical Medicine
- Applied Psychology
- Biomedical Engineering
- Medical Imaging
- Anesthesiology
- Nursing
- Preventive Medicine
- Nutrition and Food Science
- Psychiatry
- Medical Laboratory Technology
- Pediatrics
- Stomatology
- Clinical Pharmacy
- Pharmacy
- Rehabilitation Therapy
- Biotechnology
- Health Administration
- Law
- Marketing
- Clinical Science of Integrated Chinese Medicine and Western Medicine



CAMPUSES

GMU has two main campuses. The Yuexiu campus is located in the downtown centre of Guangzhou City, near Liuhua Lake Park and Yuexiu Mountain. The Panyu Campus, is a new 247 acre campus situated in Panyu District of Guangzhou City near the Pearl River, an ideal place for learning and research.

FACULTY

GMU places great emphasis on attracting talented faculty from home and abroad to develop the University. GMU is proud of its outstanding faculty led by Prof. Zhong Nanshan, a member of the Chinese Academy of Engineering. The faculty is comprised of 419 supervisors for PhD candidates and 1044 supervisors for master's students.

RESEARCH

In the past six years, GMU has undertaken over 3,000 longitudinal research projects. The number of approved research projects for The National Natural Science Foundation of China (NSFC) has ranked in the top 100 for four consecutive years and the 57th Place in 2018 among 3000 institutes in China. We have won 40 national and provincial science and technology awards and have published approximately 5000 SCI papers in prestigious journals such as Nature Medicine, New Eng J Med and the Lancet.

AFFILIATED HOSPITALS

GMU has 7 directly affiliated hospitals and 10 non-directly affiliated hospitals, specialising in respiratory diseases, neuropathy, cardiovascular diseases, obstetrics and gynecology, cancer, dental care, rehabilitation, minimally invasive surgery, primary care and more. The clinical medicine discipline of GMU is ranked in the top 1% in the world for ESI rankings (Essential Science Indicators)

