

# Study Abroad & Exchange

## Fact Sheet, January 2026

### VU Block Model and Intakes

At VU we offer extremely flexible options for Study Abroad and Student Exchange students. We offer four intakes throughout the year, as shown in the diagram below.

Students can choose to study with us for anything from one block\* (four weeks) to two semesters (one year).

\*Postgraduate students must study a minimum of 2 blocks (8 weeks)

#### Four-week block model

Students study sequential four-week units rather than juggling multiple subjects at the same time. VU is the first institution in Australia to deliver courses using the Block model. All undergraduate and the majority of postgraduate programs use this model. To find out more about our award-winning VU Block Model, visit [vu.edu.au/block-model](http://vu.edu.au/block-model)

#### Eight-week block model

Postgraduate business courses and engineering & science courses are taught in a eight-week block. In eight-week mode you study two units at a time over eight weeks (full time).

### CONTACT VICTORIA ABROAD

All queries (including syllabus requests) should be directed to the shared inbox

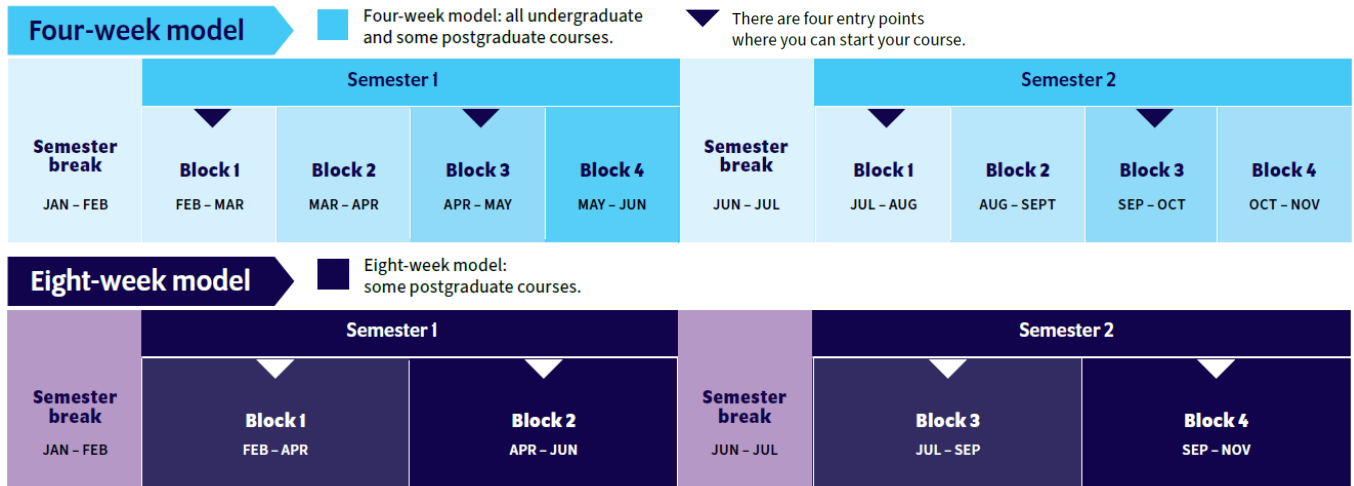
[educationabroad@vu.edu.au](mailto:educationabroad@vu.edu.au)

#### Address

Victoria Abroad  
City Campus  
370 Little Lonsdale Street  
Melbourne VIC 3000 Australia

OR

Victoria Abroad  
PO Box 14428  
Melbourne, VIC 8001, Australia



## Nominations

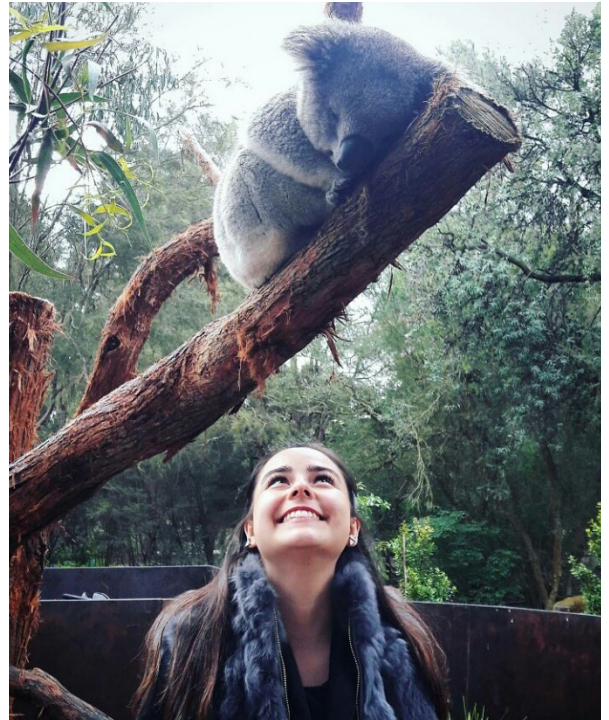
Nominations to VU are made online via our system. The information provided in the nomination form will generate a student's profile in our application system. Once the nomination is approved, the student will receive an email with a personalised link to submit their formal application.

Please submit nominations here:

<https://eaams.vu.edu.au/formlify/RunForm.aspx?formId=324>

Please note: we require the students Transcript at the time of nomination. This should be uploaded as part of the nomination. Please also indicate the number of Blocks (units) they will be joining us for.

For universities using a Study Abroad agent, there is no need to nominate through this form. Agents will continue processing the applications.



Healsville Sanctuary

## Documents Required for Application

For detailed information, refer to:

[vu.edu.au/international-students/study-abroad-and-exchange/apply-for-studyabroad-and-exchange](https://vu.edu.au/international-students/study-abroad-and-exchange/apply-for-studyabroad-and-exchange)

Students must submit their application online, after their nomination is approved they will receive detailed instructions on how to apply. As part of their application they must submit certified copies of:

- Academic transcript (at time of nomination)
- Proof of English proficiency
- Copy of passport photo ID page.

A detailed guide on how to apply can be found online.

[eaams.vu.edu.au/agents/resources/file/public/SAEX\\_student\\_guide.pdf](https://eaams.vu.edu.au/agents/resources/file/public/SAEX_student_guide.pdf)

## Study Abroad Fees

The standard Study Abroad fees for 2026 are:

- \$11,150 for 4 blocks
- \$9,250 for 3 blocks
- \$5,900 for 2 blocks
- \$3,000 for 1 block

*All prices are in Australian Dollars*



Great Ocean Road

## Unit and credit information

Exchange and Study Abroad students can take units from any of our colleges. Students will confirm their preferred units of study after they have been accepted.

Victoria University	12 credits (1 unit)
USA	3-4 credits
Canada	3-4 credits
UK	15 credits
Europe	6-7.5 ECTS

### Major areas of study

Study Abroad and Exchange students can choose from a wide range of subjects from different study areas while completing their semester(s) at Victoria University. Study areas include:

- Arts
- Business
- Education
- engineering & science
- health & biomedicine
- law & justice
- sport & exercise science.

Please note that units from the following courses are not available to exchange and study abroad students

- Dermal Sciences - course code HBDS
- Masters in Psychology - course codes AMAL, AMPE and HMPP
- Nursing - course codes HBNB and HBMA
- Osteopathy - course codes HCOP and HBSO
- Paramedicine - course code HBPD



Students by the Yarra River in the heart of Melbourne

Some other specialised units may not be available to exchange students and you will be notified in this case.

Units that have prerequisite units or knowledge may be selected; it is the home institution's responsibility to ensure that the student has the knowledge required to succeed. VU will not assess whether this is the case.

### Finding units

For a more detailed guide on selecting units we have created a Timetable Guide:

[eaams.vu.edu.au/agents/resources/file/public/inboundmobility/TimetableGuide.pdf](https://eaams.vu.edu.au/agents/resources/file/public/inboundmobility/TimetableGuide.pdf)

## Visa Information

Exchange and Study Abroad students applying for a student visa require a CoE (Confirmation of Enrolment) from Victoria University. The CoE is issued after receipt of the student's acceptance form and after payment of the tuition fees (if applicable). Students from certain countries may be able to apply for a working holiday visa instead of a student visa. Students studying less than 3 months may be eligible to apply for a Visitor visa. Students applying for a working holiday or visitor visa do not require a CoE. Information on visas can be found at: [homeaffairs.gov.au](https://homeaffairs.gov.au)

# Insurance Information

## Student Visa Holders

Applicants intending to apply for student visas must have Overseas Student Health Cover (OSHC) to obtain a student visa unless their home government has a reciprocal agreement in place with the Australian Government to provide coverage for each country's citizens.

VU offers OSHC which meets the Australian Government requirements for overseas students. It is available at a very competitive rate and offers wider coverage than you are able to purchase by yourself or through a third party. You can see what is included in the OSHC offered by VU on the Medibank OSHC website at <https://www.medibankoshc.com.au/>

If you want to arrange health insurance through another provider, they should carefully compare the premium fee and the items covered by the insurance.

## Other Visa Holders

For students applying for a alternative visa, we recommend the following health cover:  
Medibank - [medibank.com.au/overseas-health-insurance](https://www.medibank.com.au/overseas-health-insurance)

OSHC can only be purchased for those on a student visa.

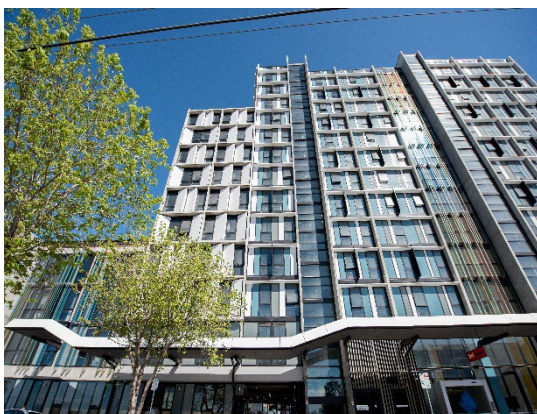
# Accommodation

We have developed a housing guide that contains detailed information about rental accommodation, homestay options, University-managed accommodation, and your rights and responsibilities. The guide is downloadable at <https://www.vu.edu.au/sites/default/files/campuses-services/pdfs/student-housing-guide.pdf>

## UniLodge Victoria University

We offer guaranteed accommodation at UniLodge Victoria University – our safe, welcoming and affordable student accommodation complex that's the perfect place to make new friends.

UniLodge VU offers a range of room options at affordable prices that include unlimited WiFi and all energy bills, so students won't have to worry about additional costs. It's also just a short walk or train ride from our main VU campuses in the west and centre of Melbourne.



VU UniLodge

Room type	Annual cost (52 weeks)*
Studio twin-share	From \$209 per week
6 bedroom multi-share	From \$270 per week
2 bedroom regular	From \$330 per week
Studio regular	From \$375 per week
Studio deluxe	From \$479 per week

*\* These rates are for UniLodge VU in Footscray in 2025 and are per person/per week in Australian Dollars. Rates include all WiFi and energy bills, all furniture and secure swipe card access.*

## Campuses

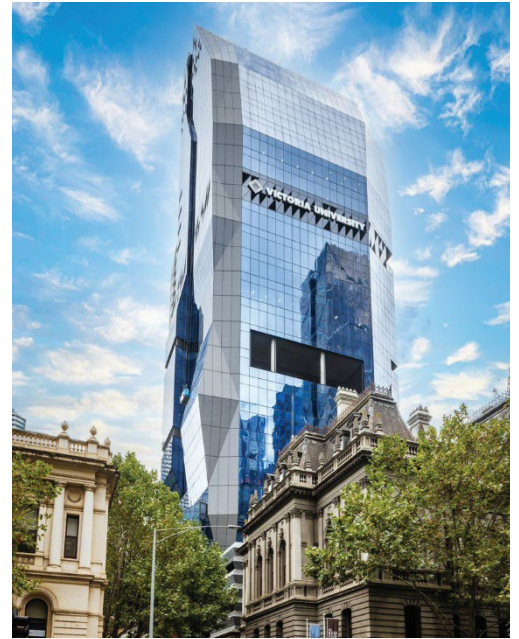
### VU City Tower

*370 Little Lonsdale Street, Melbourne.*

Study in the heart of Melbourne at the purpose-built VU City Tower, in the city's vibrant business and law precincts. With dynamic learning spaces and modern technology, it offers a supportive and engaging environment for students.

Features: Collaborative classrooms, student-run health and beauty clinics, study spaces, IT support and student services, prayer room, the VU SAP Academy and student lounge and cafes, simulation Moot Courts, a specialised law library, and a prayer room.

Course areas: Business, Counselling, Criminology, Dermal Sciences, Digital Media, Early Childhood Education, Education, English, Information Technology, International Community Development, Osteopathy, and Law & Legal Practice.



City Campus

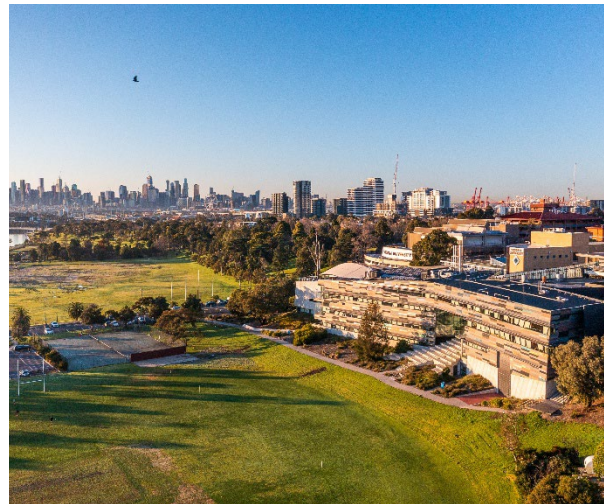
### Footscray Park

*70–104 Ballarat Road, Footscray.*

Overlooking the Maribyrnong River parklands, VU's original and largest campus is in the heart of one of Australia's fastest-growing regions – Melbourne's west.

Features: Biomechanics labs, Aquatic and Fitness Centre, Altitude Hotel, engineering labs, a TV and broadcast studio, Pride room and prayer rooms. Plus, our modern student accommodation, UniLodge Victoria University, is right over the road.

Course areas: Arts, Business, Community Development, Construction Management, Criminal Justice, Cyber Security & IT, Engineering, Education, Psychology, Science & Sport Science, Screen Media, Social and Youth Work.



Footscray Park

### Footscray Nicholson

*Corner of Nicholson & Buckley Streets, Footscray.*

A relaxed & friendly campus It's easy to find your way around Footscray Nicholson. The campus features modern learning facilities, along with unique student-run enterprises, including a restaurant and a tax clinic.

Features: Hospitality training restaurant (VenU), childcare training spaces, prayer room, a recreation centre with sports courts and a library perfect for studying.

Course areas: Business, Early Childhood Education & Care, Events Management, Hospitality, Music, School-Based Education & Support.



Footscray Nicholson

## English language requirements

English Test	Undergraduate	Postgraduate
<b>IELTS (Academic Module):</b> Overall score (no band less than)	6.0 (6.0)	6.5 (6.0)
<b>TOEFL ITP:</b> Test score (no section less than)	523 (Listening 47, Written Expression 50, Reading 50)	N/A
<b>TOEFL Internet:</b> Test score (no section less than)	67 (Listening 12, Speaking 18, Reading 15, Writing 21)	79 (Listening 19, Speaking 19, Reading 18, Writing 22)
<b>Pearson Test of English (PTE):</b> Overall score (no section score less than)	52 (52)	60 (52)
<b>Cambridge English - Advanced (CAE):</b> Overall CAE score (no band less than)	169 (169)	176 (169)
<b>International Baccalaureate Diploma Program</b>	Minimum of 4 in English A1 or A2 (Higher and Standard level) OR a minimum of 5 in English B (Higher level)	N/A
<b>Denmark: Studentereksamen</b>	Grade 7 in English	N/A
<b>Norway: Vitenemal</b>	Grade 4 in English	N/A
<b>Sweden: Slutbetyg/ Avgangsbetyg</b>	Grade 4/VG in English	N/A
<b>Germany: Abitur/ Fachhochschulreife</b>	Grade 3	N/A
<b>DAAD</b>	3 stars in all categories	4 stars in all categories

**Please Note:** If a student's degree is taught fully in English we are able to accept a letter from the home university confirming this in order to meet our English language requirements.

## Arrival Assistance

Victoria University offers incoming students a free pick-up service from Melbourne International Airport to their accommodation. Students need to complete the Airport Reception Request form at least ten days before they intend to arrive in Melbourne.

[vu.edu.au/request-airport-reception](http://vu.edu.au/request-airport-reception)

## Local Transportation

Victoria operates using a cashless ticketing system called myki. After purchasing a reloadable myki card, students can use the pass for trains, trams and buses.

The average public transport 'concession' (student) rate per day is AU\$5.50, the average adult rate is AU\$11.00. Daily, weekly and monthly fares are available.

[transport.vic.gov.au/tickets-and-myki/fares](http://transport.vic.gov.au/tickets-and-myki/fares)



## 2026 Application Deadlines

### Semester 1, Block 1

Nomination deadline	22 December, 2025
Application deadline	9 January, 2026
Acceptance deadline	14 January, 2026
Orientation session	13 February, 2026

### Semester 1, Block 3

Nomination deadline	2 March, 2026
Application deadline	9 March, 2026
Acceptance deadline	12 March, 2026
Orientation session	24 April, 2026

### Semester 2, Block 1

Nomination deadline	1 June, 2026
Application deadline	8 June, 2026
Acceptance deadline	11 June, 2026
Orientation session	24 July, 2026

### Semester 2, Block 3

Nomination deadline	27 July, 2025
Application deadline	3 August, 2026
Acceptance deadline	6 August, 2026
Orientation session	24 September, 2026

## 2026 Academic Dates

### 4 Week Block Study Dates

Semester 1, Block 1	16 February – 13 March
Semester 1, Block 2	16 March – 17 April
Break	20-25 April
Semester 1, Block 3	27 April – 22 May
Semester 1, Block 4	25 May – 19 June

Semester 2, Block 1	27 July – 21 August
Semester 2, Block 2	24 August – 18 September
Break	21-25 September
Semester 2, Block 3	28 September – 23 October
Break	26-30 October
Semester 2, Block 4	2 November – 27 November

### 8 Week Block Study Dates

*(Postgraduate business courses and engineering & science courses)*

Semester 1, Block 1	16 February – 17 April
Break	20-25 April
Semester 1, Block 2	27 April – 19 June

Semester 2, Block 1	27 July – 18 September
Break	21-25 September
Semester 1, Block 2	28 September – 20 November