

國立陽明交通大學

NATIONAL YANG MING CHIAO TUNG UNIVERSITY



Exchange Program Guideline

Office of International Affairs



Office of International Affairs (OIA)





Contact Information

Outbound Exchange Program (NYCU students to your university)

- Ms. Cherrie Chow
- cherrie@nycu.edu.tw

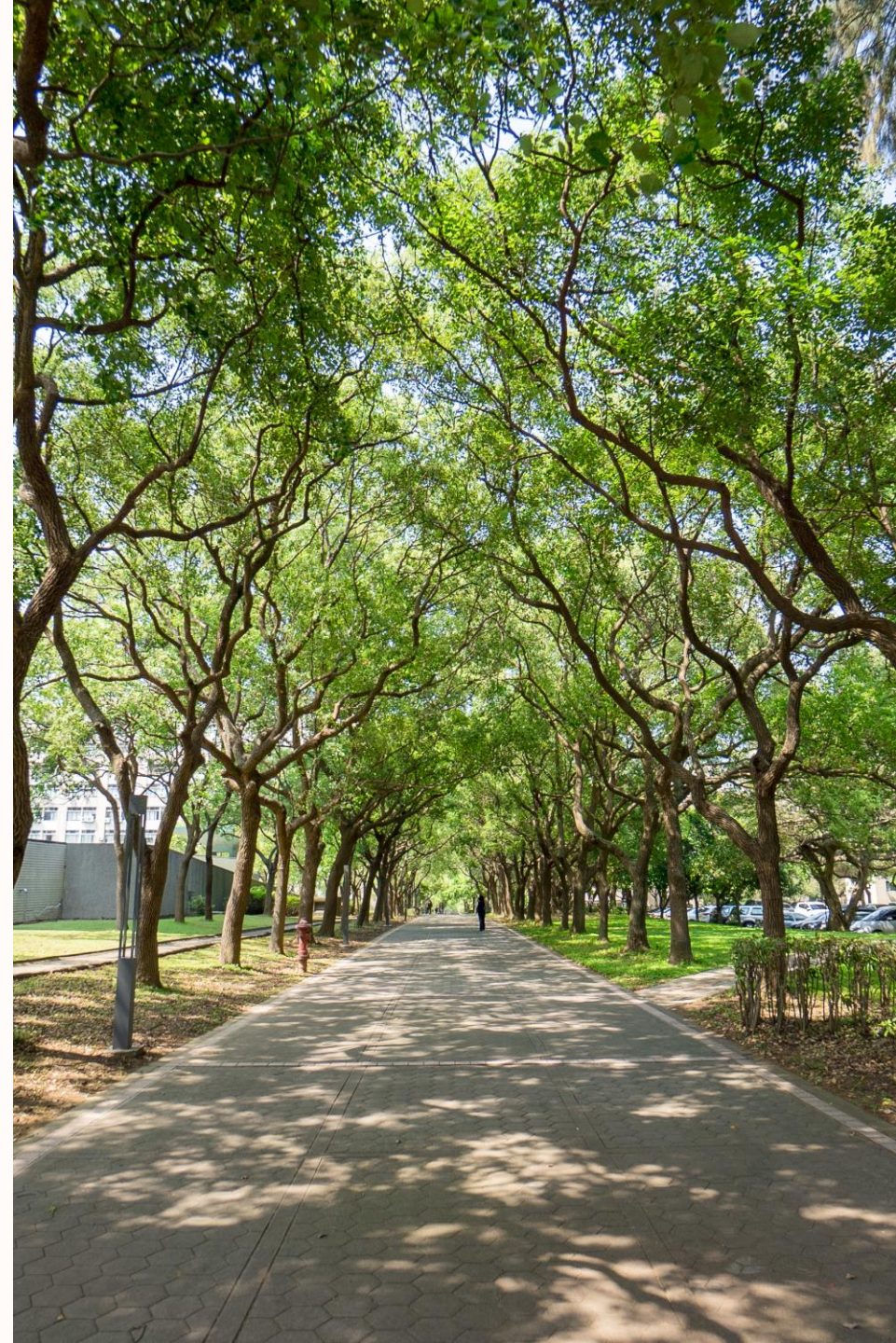
Inbound Exchange Program (Students from your university to NYCU)

- Ms. Lily Cheng
- lilycheng@nycu.edu.tw

Inbound Exchange Student Services

- Ms. Iris Chuang (Chiaotung Campus)
- irischuang@nycu.edu.tw

- Ms. Meggy Niu (Yangming Campus)
- meggyniu@nycu.edu.tw





Facts about NYCU



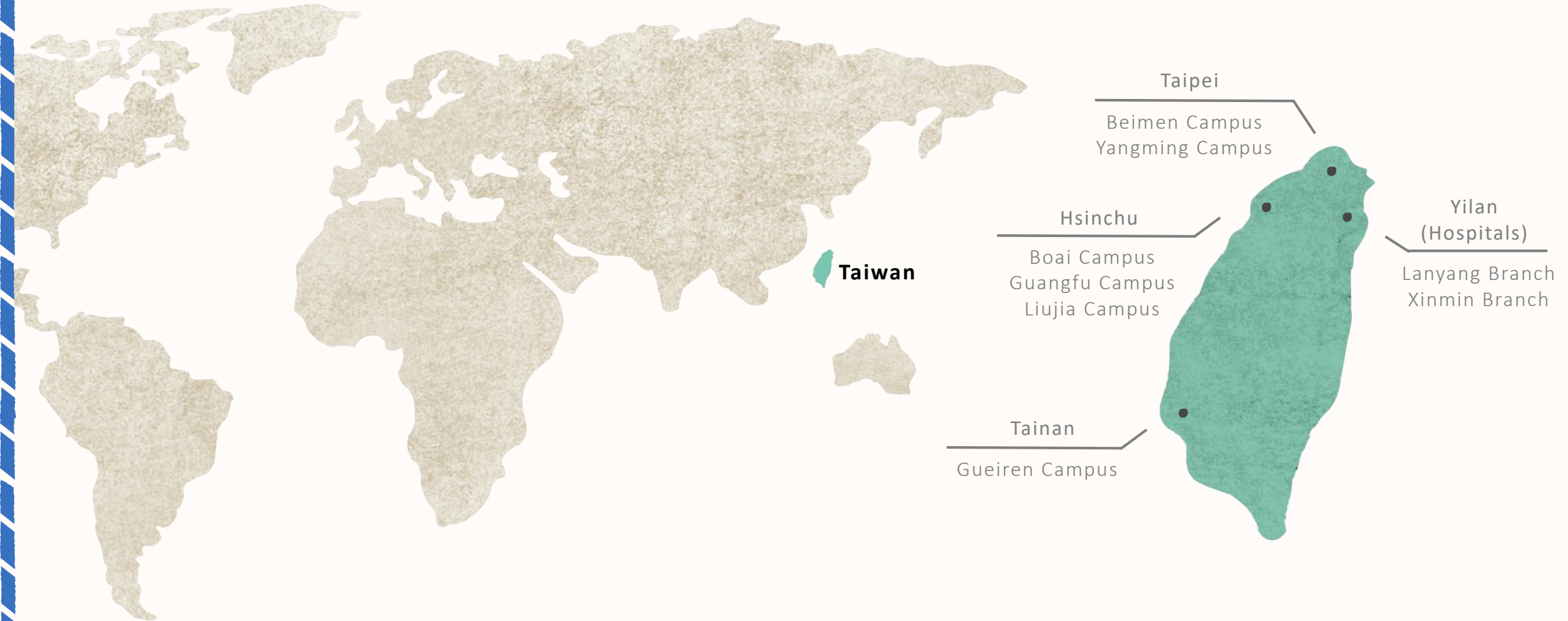
National Yang Ming Chiao Tung University was created in 2021 through the merger of two universities:

National Yang-Ming University and National Chiao Tung University.

Yang Ming, which focused on biomedical research, and Chiao Tung, which focused on electronic communication research, were both top-tier universities in Taiwan. At present, there are 19 colleges and 74 university/college-level research centers. In addition to implementing effective integration and innovation under the conventional organizational structure of regular teaching, research, administration, and student affairs, NYCU is singularly unique as it will establish Taiwan's most innovative smart medical research. NYCU will combine the strengths of Yang Ming and Chiao Tung to jointly develop medical applications in terms of AI, telemedicine, medical robots, Internet of Things, wearable devices, and block-chain biomedical as Eco-system amongst other developments.

國立陽明交通大學
NYCU

Campus Map



NYCU at a Glance

Key Figures and Rankings

Students 8,431 Undergraduates
20,414 11,983 Graduates

Faculty **1,171**

Research Staff **408**

QS Top University Ranking #268

(By subjects)

#117 Engineering - Electrical & Electronic

#129 Computer Science & Information Systems

#139 Engineering & Technology

#101-150 Nursing

#151-200 Medicine

19 Colleges

- Guangfu Campus
- Yangming Campus
- Other Campuses

Computer Science

Electrical & Computer Engineering

Engineering

International Semiconductor Technology

Law

Science

Artificial Intelligence (Gueiren Campus)

Biological Science & Technology (Boai Campus)

Hakka Studies (Liuja Campus)

Management (Guangfu & Beimen Campus)

Photonics (Gueiren Campus)

Humanities & Social Sciences

Biomedical Science & Engineering

Dentistry

Life Sciences

Medicine

Nursing

Pharmaceutical Sciences

Both Yangming and Guangfu campuses have the College of Humanities & Social Sciences.



Inbound Exchange Program





Introduction



NYCU offers inbound international students an opportunity for academic and cultural immersion.

Types	Remarks	How to apply
Inbound Exchange Program	Students enrolled (or matriculated) at partner institutions and nominated by coordinators of home institutions.	The nomination link will be email to partner institutions' coordinator in every nomination period. The link is different in each semester.
Inbound Visiting Program (fee-paying exchange)	Students enrolled at partner institutions but not officially nominated by home institution; or, students from non-partner institutions.	Students apply directly via the online application system in the application period.

Important Dates

Application timeline

Students may choose to exchange for one semester or one academic year.

*Academic year at NYCU begins in September; full academic year exchange can only begin in Fall Semester.

Semester	Nomination Deadline	Application Deadline
Fall Semester (Sep. to Jan.)	March 30 th	April 15 th
Spring Semester (Feb. to Jun.)	September 30 th	October 15 th

*The confirmed academic calendar will be announced in late June each year.

NYCUCourse Timetable

Instruction	1.	Website: https://timetable.nycu.edu.tw/
	2.	Choose English in “Language”, and the system will switch to English version.
	3.	Choose “College” in “Search for Department” and search for the program under the college you choose.
	4.	Tick the box in front of “Other Search Parameters” and click on “English Medium Courses”.
	5.	The course list will be finalized two months before the start of each semester. Please look for the courses in the previous semesters during application period.





NYCU Departmental Application Requirements

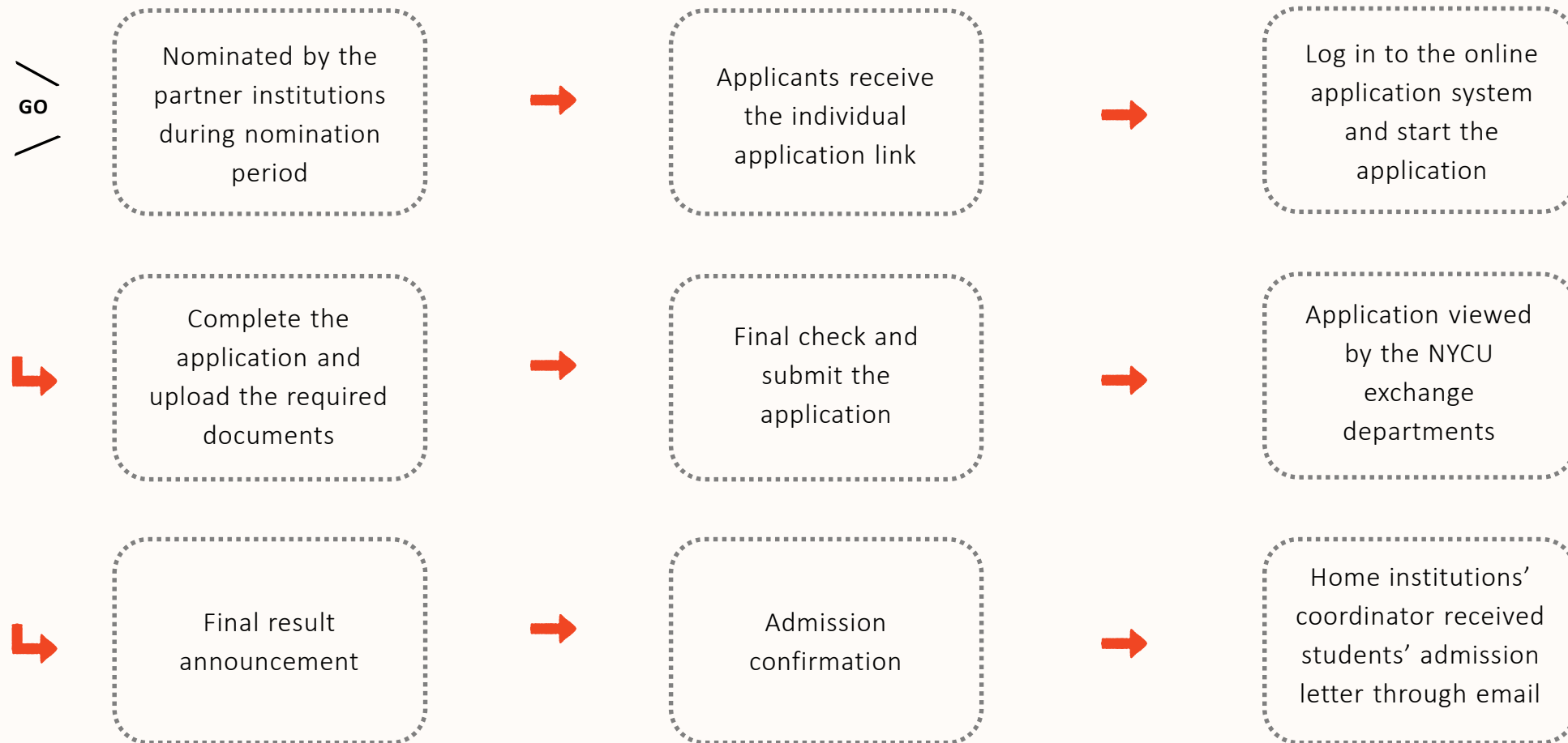


[NYCU Available Departments for Inbound Exchange Program](#)

****Please read the requirements carefully before applying****

1. The department would review the applications and the supporting documents; each department reserves the right to reject or re-allocate applicants to appropriate department.
2. Minimum credit requirement (per semester)
Undergraduate: 9 credits; Graduate: at least 2 academic courses
3. **Students are able to choose courses across departments or colleges (not limited to the enrolled department/college only).** Please be aware that some professors may require the students to own basic knowledge about the course.
4. Some popular courses are very competitive and exchange students may not be able to get in. It is suggested students to be more flexible about course choice.
5. **College of Management** is limited to “Final-year undergraduate students or graduate students” . Most English-taught courses are offered in graduate level.

Application Procedures

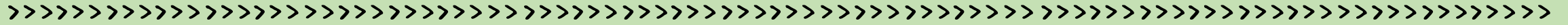


Application Documents

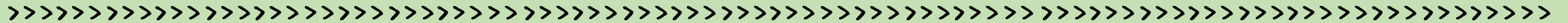
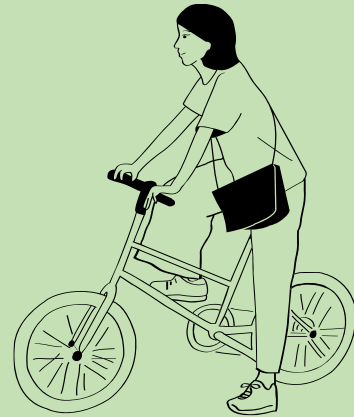
Required Documents

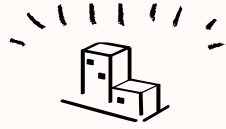
Please prepare all the documents and submit them to the online application system. The documents should **be PDF format and in English.**

NO.	Documents	Remarks
1	Application form	Both applicant and home institution' s coordinator have to sign the last page.
2	Curriculum vitae (CV)	Personal resume in English.
3	Study Plan	It may include your motivation and a tentative list of courses the student would like to take during the exchange period.
4	Official transcript	The academic records approved by the home institution and should be in English.
5	Official enrolment letter	The enrolment letter from the home institution or "valid" student card.
6	Passport (Information page)	It should have at least 6 months of validity.
7	Supporting document (optional)	E.g. proof of language proficiency, certificate of awards or competitions, etc.
8	Recommendation letter (optional)	The letter from the home institution' s coordinators or professors.



Facilities & Student Services





University Facilities

- 24-hour self-study center & study room
- Prayer room
- Bookstore
- Dry cleaning service
- Hair salon & optician



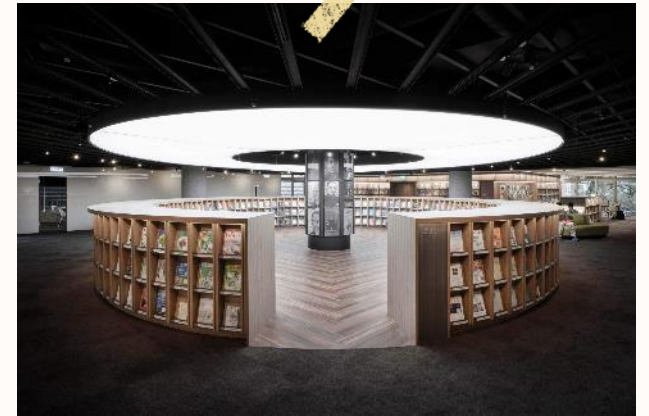
1 Swimming Pool (outdoor/ indoor)



2 Fitness Center



3 Dining Hall



4 Library



5 Library – Reading Area



6 Tennis Court



7 General Court



8 Basketball Court

Division of Overseas Student Affairs is part of the Office of International Affairs, and is established to offer on-site services, such as accommodation, insurance, visa, registration and other student needs. Furthermore, International student society, host-family arrangement, and international student emergency are taken care of by them as well.





Orientation

The orientation will be held at the beginning of each academic semester. It will introduce NYCU to new international students and covers important and helpful topics.

Free Chinese Courses

- One-on-one tutoring
- Chinese Cultural Salon: Cultural experience courses
- Courses range from introductory to advanced levels (4 levels)
- Elective courses focusing on useful situational conversations



Chinese Language Division,
Language Teaching and Research Center



Please feel free to contact us for any inquiries.

