

# Fact Sheet for Partner Universities 2019/2020

## Feng Chia University--International Affairs Office

Address	100 Wenhwa Road, Seatwen, Taichung, Taiwan 40724, R. O. C.
Number of Campus/Specialization per campus	3 Campus <ul style="list-style-type: none"> <li>• Main campus--teaching, research and administration</li> <li>• Fu Xing campus--dormitories, restaurants and recreation</li> <li>• Central Science Park campus--R &amp; D, services and promotion of technology</li> </ul>
Head of International Office	Dr. LAI, WEN-HSIANG
Contact person for incoming students (Name, email address, phone number)	Ms. Cheyenne Chang <a href="mailto:changyh@fcu.edu.tw">changyh@fcu.edu.tw</a> +886-4-24517250 ext. 2498
Contact person for outgoing students (Name, email address, phone number)	Ms. Valerie Sun <a href="mailto:tsun@fcu.edu.tw">tsun@fcu.edu.tw</a> +886-4-24517250 ext. 2506

## General Websites

Website of the University	<a href="http://en.fcu.edu.tw/wSite/mp?mp=3&amp;mobile=false">http://en.fcu.edu.tw/wSite/mp?mp=3&amp;mobile=false</a>
Website for exchange/visiting students	<a href="http://www.oia.fcu.edu.tw/is/recruit.php?class=101">http://www.oia.fcu.edu.tw/is/recruit.php?class=101</a>

## Academic Calendar

Start and end dates of the fall term (lecture period)	<b>2019 Fall Semester</b> Classes: September 09, 2019 ~ January 08, 2020 Winter Vacation: January 09 ~ February 06, 2020
Start and end dates of the spring term (lecture period)	<b>2020 Spring Semester</b> Classes: February 10 ~ June 10, 2020 Summer Vacation: June 11 ~ early September, 2020
Link to academic calendar	<a href="http://en.fcu.edu.tw/wSite/lp?ctNode=19574&amp;mp=3&amp;ctNode=38619&amp;idP ath=38603_38619">http://en.fcu.edu.tw/wSite/lp?ctNode=19574&amp;mp=3&amp;ctNode=38619&amp;idP ath=38603_38619</a>
Examination period(s):	<b>2019 Fall Semester Final Examination Week</b> : January 06 ~ 08, 2020 <b>2020 Spring Semester Final Examination Week</b> : June 08 ~ 10, 2020
Campus Open Date	<b>Fall Semester</b> : September 06, 2019 <b>Spring Semester</b> : February 07, 2020

## Admission and Registration

Deadlines for nomination & application	<b>Fall Semester</b> : April 30 / <b>Spring Semester</b> : October 31
Link to application form/procedure	<a href="http://www.oia.fcu.edu.tw/is/recruit.php?class=101">http://www.oia.fcu.edu.tw/is/recruit.php?class=101</a>

## Courses Offered or Restrictions

Course offered & Restriction	Exchange students are allowed to take most of academic programs and doing the cross-departmental studies in FCU. However, undergraduate students may be unable to sign up graduate courses if they are not permitted by the department or faculties. Normally, most of bachelor students are not allowed to attend the higher level courses (ie. Master/PhD Programs). Master/PhD students can take bachelor courses, but not able to get an equivalence credits for graduated studies.
Website for undergraduate or master studies (Course Search System)	<a href="http://service005.sds.fcu.edu.tw/">http://service005.sds.fcu.edu.tw/</a> (Chinese Search) <a href="http://service005.sds.fcu.edu.tw/?lang=en">http://service005.sds.fcu.edu.tw/?lang=en</a> (English Search) Number of validated credits or courses are based on the requirements of the home university.

# Fact Sheet for Partner Universities 2019/2020

## Language requirements

<ul style="list-style-type: none"> <li>- TOEFL / IELTS</li> <li>- GMAT</li> <li>- Other programmes / Tests</li> </ul>	TOEFL iBT 70 / TOEIC 749 for English Programs of the Department of International Business (BIBA) HSK Lever 6 / TOCFL Level 5 for Chinese-taught courses
---	--

## Accommodation

<p><b>No</b> in-campus dorms available for short-term exchange/visiting students, please check the links for other alternative housing/accommodations :</p>	<p><a href="http://www.liguan.com.tw/index_en.aspx">http://www.liguan.com.tw/index_en.aspx</a>  <a href="https://www.formosalifeservices.com/">https://www.formosalifeservices.com/</a>            Hotels nearby the campus:  <a href="http://en.inone.com.tw/">http://en.inone.com.tw/</a>  <a href="http://www.leparker-hotel.com.tw/">http://www.leparker-hotel.com.tw/</a>  <a href="http://www.greenhotel.com.tw/en/aboutus/">http://www.greenhotel.com.tw/en/aboutus/</a>  <a href="http://www.inskyhotel.com/">http://www.inskyhotel.com/</a></p>
---	--

## Living expenses

Average accommodation may cost per month	Average around NT\$7,000-8,500 per month, plus deposit fee NT\$10,000-15,000
Other mandatory expense <b>*(Required for Registration)</b>	International Medical insurance NT\$2,500 (5 months/one semester) → <b>COMPLUSORY</b> for every foriegner students Student Card NT\$250 Student Accident Insurance & Computer Use NT\$950 Physical Check (Campus Health Examinations) NT\$550

## Welcome Service

Mentor System	Some local students/volunteers will be assigned for exchange students to help with airport pick-up, orentation and housing issues.
Welcome event / Orientation week	<b>Fall:</b> <a href="#">September 06, 2019</a> / <b>Spring:</b> <a href="#">February 07, 2020</a>
Airport pickup	The airport pickup service is only available in <b>Fall Semesters</b> . The fees for airport pick-up service maybe around NT\$1200 per person and should be paid by the applicants (exchange student).
(Intensive) language courses offered during the semester (Fee-Paying Courses)	Yes, but the Chinese Courses of Chinese language Center (CLC) are <b>fee-paying</b> courses. Students need to pay extra fees for the CLC's programs. The tuition fees depend on the learning hours per week, see more details at: <a href="http://www.clc.fcu.edu.tw/">http://www.clc.fcu.edu.tw/</a>

## Other useful information / Comments

Visa procedures	Students should handle their visa applications in their home countries prior to entry to Taiwan. Please apply a vistor visa (1 semester study)/a resident visa (1 year study) at the nearest Taipei Economic and Cultural Office (TECO) or embassies.
Health Check Forms for Visas	1-year exchange students should complete the Health Report ( <b>FORM B</b> ) in their home country prior to apply a residence visa. 1-semester exchange students are required to complete the Health Report ( <b>FORM C</b> ), but the X-ray check is suggested to do <b>after</b> entry to Taiwan. <b>*All of foreigner students are required to do a X-Ray check after they enter to Taiwan.</b>
Special Academic Programs	The intensive courses of Chinese Language Center (CLC) are <b>non-fee-waiving programs</b> and no credits (0 credit). <b>CLC's courses may cause extra fees for exchange students.</b> Some FCU tailor-made programs are bot opened to exchange students. Moreover, students may get permission in advance or be admitted by the International School of Technology and Management (ISTM) in participation with their English-taught classes or double degree's programs.



■ **Date of Establishment**

Feng Chia University (FCU) was Established in 1961.

■ **Academics**

FCU is comprised of 10 colleges and two schools that offer 40 bachelor's programs, 42 master's programs, 15 doctoral programs, 17 continuing studies master's programs, and 3 continuing studies bachelor's programs.

■ **Students / Faculty**

Currently, FCU has over 21,000 students - of which more than 1,500 are international students, 2,200 faculty and staff.

■ **Alumni**

There are more than 180,000 FCU alumni all over the world.

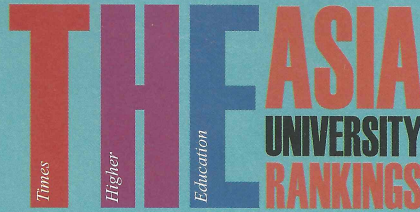
# Feng Chia University



## Best Location

FCU is situated in Taichung, a city known for its fast-paced growth and convenient transportation. We are just one hour away from Taipei or Kaohsiung via the High Speed Rail. Taichung has a pleasant climate and environment where is Taiwan's most livable metropolitan city.

FCU has three campuses: The main campus comprises academic and administrative buildings and contains state-of-the-art teaching and research facilities. Student dormitories, and extensive recreational and sports facilities, are located at the Fuxing campus. The Central Taiwan Science Park campus offers sophisticated business incubation and EMBA-related programs.



## FCU performs well in the 2017 Asia University Ranking

On March 16, the Times Higher Education magazine released its 2017 ranking of the top universities in Asia. Launched in 2013, the survey provides an overview of the top 200 universities in Asia.

The ranking of university performance is measured using 13 indicators in five main categories - teaching, research, citations, international outlook, and industry income.

In 13 of the survey's 16 fields, FCU ranked the highest of all private comprehensive universities. FCU finished first - for the second year in a row - in "Geology, Environment, Earth and Marine Science," "Mathematics and Statistics," "Civil Engineering," "Economics and Econometrics," and "Architecture." FCU finished as the top private comprehensive university for the first time in a number of other fields, including "Computer Science," "Business and Management," "History, Philosophy and Theory," "Art, Performing Arts and Design," "Mechanical and Aeronautical Engineering," "Accounting and Finance," "Communication and Media Research," and "Electronics and Electrical."

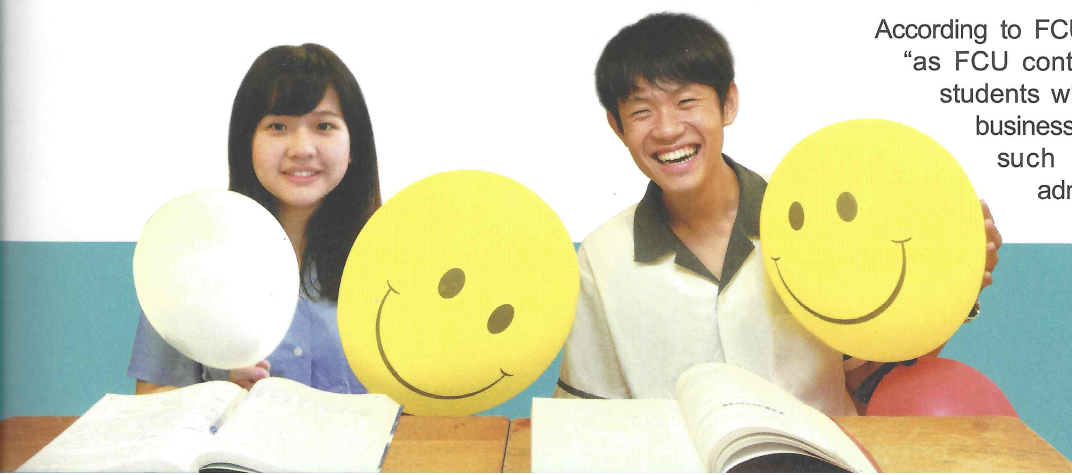
International recognition from the Times Higher Education survey demonstrates the elite performance of FCU's teachers and students, as well as shows the university's potential for improvement in a diverse variety of fields.

## FCU shines in Cheers magazine's 2017 Best University Guide

FCU has once again performed exceptionally well in a Cheers magazine university survey. According to its 2017 Best University Guide, the magazine employed a number of methods to rank Taiwan's universities. FCU received a first place ranking for student capabilities while participating in academic exchanges in China, a second place ranking for university performance, a second place ranking for the corporate world's most-favored private university graduates, a third place ranking for Chinese student capabilities, and a third place ranking for international student capabilities.

Of particular note in this year's guide is the university performance survey, which is a dynamic ranking of Taiwan's universities by university presidents from across the country - one hundred and forty university presidents participated in this year's survey. The second place position is testament to the quality of FCU's performance, adaptability, and vision.

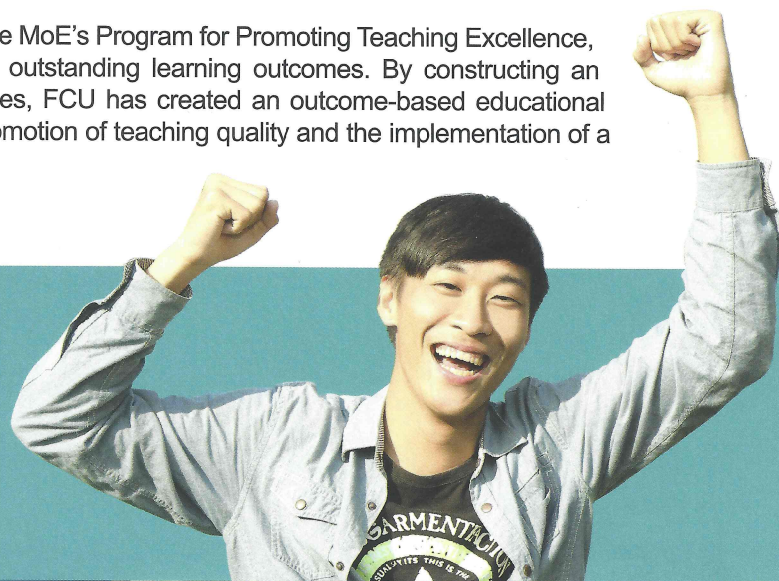
According to FCU President Lee Bing-Jean, "as FCU continues to cultivate talented students who participate in innovative businesses, it is satisfying to receive such positive recognition and admiration for our efforts."



The Ministry of Education (MoE) recently announced the 2017 recipients of the Program for Promoting Teaching Excellence awards. With NT\$80 million in financial subsidies, FCU once again received the most grants of any university in the nation. In fact, FCU has had continuous success in this ranking, surpassing any other public or private university by receiving the highest total subsidies. The award not only demonstrates FCU's outstanding academic achievements and continued commitment to educational excellence, but also serves as recognition of the hard work and determination of FCU's students and faculty.

FCU is striving to build a wealth of resources that lead to learning effectiveness. Training students to have both practical skills and theoretical knowledge from a multi-faceted background remains a key educational objective at FCU. To that end, FCU has created a number of programs that bridge the theoretical-practical educational divide, such as the International School of Technology and Management, and has created links with industry through the FCU D.School. At the same time, FCU is devoted to increasing international educational opportunities.

In the 13 years that FCU has implemented the MoE's Program for Promoting Teaching Excellence, great strides have been taken to construct outstanding learning outcomes. By constructing an educational system rich in teaching resources, FCU has created an outcome-based educational system, one that is organized around the promotion of teaching quality and the implementation of a complete educational support system.



## FCU honored by the Ministry of Education

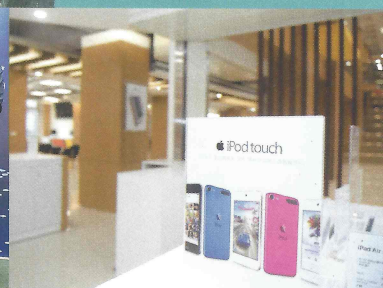
逢甲大學  
Feng Chia University

全臺唯一

Apple RTC 蘋果區域教育培訓中心



Regional  
Training Center



## Taiwan's only Apple-certified training program now offered at FCU

Apple recently established Taiwan's first Apple Regional Training Center at FCU, which makes FCU the only university in Taiwan authorized to conduct Apple - certified training courses. In the future, all instructors in the Apple App teacher development program will be trained at FCU.

FCU is committed to ensuring students receive learning opportunities that increase their employability and competitive advantage. As such, FCU built the iHouse, which provides an experimental platform for realizing a truly "intelligent" home, and offers specialized computer coaching, and computer equipment and space that is available 24-hours a day. In addition, FCU is encouraging students to enroll in computer science-related courses. For instance, new students enrolled after the 2017 academic year will now take a number of one-credit required courses, as well as a number of elective courses - such as iOS Swift and Android programming languages - that are designed to accommodate different interests.

FCU will work with Apple to provide courses that introduce software development, such as HomeKit and Playgrounds, and will also offer relevant courses for primary and secondary schools, as well as the community, so that programming languages and software development will take root and flourish in Taiwan.

## College of Humanities and Social Sciences

- Department of Chinese Literature
- Department of Foreign Languages and Literature

## College of Business

- Department of Accounting
- Department of International Business
- Bachelor's Program of International Business Administration (English Program)
- Department of Public Finance
- Department of Cooperative Economics and Social Entrepreneurship
- Department of Statistics
- Department of Economics
- Department of Business Administration
- Department of Marketing

## College of Construction and Development

- Department of Civil Engineering
- Department of Water Resources Engineering and Conservation
- Department of Urban Planning and Spatial Information
- Department of Transportation and Logistics
- Department of Land Management

## International School of Technology and Management

- RMIT-FCU Dual-Degree Bachelor's Program in Business and Innovation
- SJSU-FCU Dual-Degree Bachelor's Program in Business Analytics
- Purdue-FCU Dual-Degree Bachelor's Program in Electrical and Computer Engineering

## College of Finance

- Department of Finance
- Department of Risk Management and Insurance
- Bachelor's Program of Financial Engineering and Actuarial Science

## College of Engineering

- Department of Mechanical and Computer-Aided Engineering
- Department of Fiber and Composite Materials
- Department of Industrial Engineering and Systems Management
- Department of Chemical Engineering
- Department of Aerospace and Systems Engineering
- Bachelor Program in Precision System Design

## College of Sciences

- Department of Applied Mathematics
- Department of Materials Science and Engineering
- Department of Environmental Engineering and Science
- Department of Photonics

## College of Information and Electrical Engineering

- Department of Information Engineering and Computer Science
- Department of Electronic Engineering
- Department of Electrical Engineering
- Department of Automatic Control Engineering
- Department of Communications Engineering
- Honor Program, College of Information and Electrical Engineering

## School of Architecture

- General Program, School of Architecture

Check in at  **F**<sub>eng</sub> **C**<sub>hia</sub> **U**<sub>niversity</sub>

### Office of Student Recruitment and Admission

No. 100, Wenhwa Road., Seatwen, Taichung 40724, Taiwan, ROC

TEL : +886-4-24517250 Ext. 2181~7 FAX : +886-4-24512908

E-mail : [admission@fcu.edu.tw](mailto:admission@fcu.edu.tw) [http : //www.fcu.edu.tw](http://www.fcu.edu.tw)